



  
BUSH BUSINESS FURNITURE  
**Milano2**



***Your Office Will Never Be The Same!***

**HQ 24 West 39th Street New York City, NY 10018 Tel: 888.442.8242**

Serving the Nation: Atlanta | Boston | Chicago | Dallas | Denver | Houston | Los Angeles | Miami | Philadelphia | San Diego | Tampa | Virginia | Washington DC

# BBF fits your style, your budget, your business.

## BBF fits your furniture needs with:



- Product lines for varying space requirements and work styles
- Styles and aesthetic choices for any budget
- Products tested to withstand 40-hour+ work weeks
- Products that perform anywhere you work
- Office desks, credenzas, hutches, and Filing drawers to accommodate any task.

## BBF fits needs for value-added service:



- Nationwide delivery and installation to any zip code\*
- Two-day order fulfillment, through our East and West coast distribution centers
- Accommodation of small orders and quick turnarounds
- Environmentally-conscious operating and manufacturing processes
- RTA Office Furniture delivers right to your door for a perfect DIY office furniture solution
- Full Assembly also available!

\*Continental U.S.

“



*Our small accounting firm needs budget office furniture. Is it too much to ask for professional space planning & installation for three offices?”*

-Stuart, Traditional Small Business



*“I need cool office furniture for our four person graphic design firm right away. Unfortunately everything I've seen that matches our aesthetic is way out of our price range”*

- Angela, Non-Traditional Small Business



*“As Facilities Manager I set up 8-10 telecommuter remote office locations monthly for around \$ 1500 each.”*

-Whitney, Remote Office Environment



*I'm launching my own business and I need high-quality home office modular furniture for a professional, home-based office.”*

- Brandon, Office@Home Environment

”



## Welcome to the corner office.

You still have a job to do, but you've also earned the freedom and means to express your personal taste. The Bush Milano executive desk appeals to your practical side and looks good doing it.



Harvest Cherry Finish  
72" Double Pedestal Kneespace Credenza (F/F, F/F), 72" Credenza Overhead  
(2) 36"W 2-Drawer Lateral File, (2) 36"W Bookcase Overhead with Glass Doors  
72"W Double Pedestal Desk (F/F, B/B/F)

- Impressive
- Solid and dependable
- Polished and refined
- Easy to spec
- Perfect marriage of style and practicality



# Fits your function



Golden Anigre Finish  
72" Universal Freestanding Peninsula, 42"W RH Single Pedestal Return,  
36"W 2-Drawer Lateral File, 72"W Credenza Overhead,  
36"W Bookcase Overhead w/Glass Doors

## What kind of office furniture do you need?

How will you use it? This Bush Office desk features a range of options from a single desk to multiple workstations.

Choose one of the configurations featured here or have an office furniture layout completed free of charge.





**Harvest Cherry Finish**

72" Universal Freestanding Peninsula, 42" W Bridge,  
72" W RH Single Pedestal Credenza (F/F), 72" W Credenza Overhead



**Golden Anigre Finish**

72" W RH Single Pedestal Credenza (F/F)  
42" W LH Single Pedestal Return,  
72" W Credenza Overhead,  
72" Universal Freestanding Peninsula



**Harvest Cherry Finish**

72" W Bow Front Double Pedestal Desk (F/F, B/B/F)  
42" W Bridge, 72" W LH Single Pedestal Credenza (F/F)  
72" W Credenza Overhead







# Features

- Ready to assemble office furniture construction; pedestals and overhangs are shipped pre-assembled
- Durable, styled edge banding resists collisions and dents
- Exclusive Diamond Coat® work surface is one of the most durable, attractive surfaces available in commercial office furniture, featuring superior resistance to scratches, abrasions and stains
- Meets ANSI/BIFMA standards for safety and performance
- Commercial office furniture quality backed by a limited lifetime warranty



Styled edge banding



Diamond Coat® work surfaces



Frosted glass  
adds sophistication

# Quality Office Furniture BUSH MILANO 2

## Configuration Ideas



Qty.	Item
1	72"W Universal Freestanding Peninsula
1	72"W Credenza Overhead
1	42"W RH Sngle Pedestal Return
1	36"W 2-Drawer Lateral File
1	36"W Bookcase Overhead w/Glass Doors



Qty.	Item
1	72"W Double Pedestal Kneespace Credenza (F/F, F/F)
1	72"W Double Pedestal Desk (F/F, B/B/F)



Qty.	Item
1	72"W Bow Front Double Pedestal Desk (F/F, B/B/F)
1	42"W Bridge
1	72"W LH Sngle Pedestal Credenza (F/F)
1	72"W Credenza Overhead
1	36"W 2-Drawer Lateral File
1	36"W Bookcase Overhead w/Glass Doors



Qty.	Item
1	72"W Universal Freestanding Peninsula
1	42"W Bridge
1	72"W RH Sngle Pedestal Credenza (F/F)
1	72"W Credenza Overhead

## Quality BUSH Business Furniture MILANO Configuration Ideas



71 $\frac{3}{8}$ "H x 141 $\frac{7}{8}$ "W x 95 $\frac{1}{2}$ "D

Qty.	Item
1	72"W Double Pedestal Kneespace Credenza (F/F, F/F)
1	72"W Credenza Overhead
2	36"W 2-Drawer Lateral File
2	36"W Bookcase Overhead w/Glass Doors
1	72" W Double Pedestal Desk (F/F, B/B/F)



71 $\frac{3}{8}$ "H x 101 $\frac{1}{2}$ "W x 106 $\frac{3}{4}$ "D

Qty.	Item
1	72"W LH Bow Front Single Pedestal Desk (B/B/F)
1	42"W Bridge
1	72"W RH Single Pedestal Credenza (F/F)
1	66"W Credenza Overhead
1	36"W 2-Drawer Lateral File



71 $\frac{3}{8}$ "H (Width and Depth defined by user)

Qty.	Item
1	72"W RH Single Pedestal Credenza (F/F)
1	42"W LH Single Pedestal Return
1	72"W Credenza Overhead
1	72"W Universal Freestanding Peninsula



# Work Surfaces and Extensions



72" Bow Front Double  
Pedestal Desk (F/F, B/B/F)  
29"H x 71 $\frac{1}{8}$ "W x 36 $\frac{1}{8}$ "D



72"W Double Pedestal Desk  
(F/F, B/B/F)  
29"H x 71 $\frac{1}{8}$ "W x 29 $\frac{3}{4}$ "D



72"W RH Single Pedestal  
Bow Front Desk (B/B/F)  
29"H x 71 $\frac{1}{8}$ "W x 36 $\frac{1}{8}$ "D



72"W RH Double Pedestal  
L-Desk (B/B/F, F/F)  
29"H x 71 $\frac{1}{8}$ "W x 83 $\frac{1}{2}$ "D

60"W Double Pedestal Desk  
(F/F, B/B/F)  
29"H x 59 $\frac{1}{2}$ "W x 29 $\frac{3}{4}$ "D

72"W LH Single Pedestal  
Bow Front Desk (B/B/F)  
29"H x 71 $\frac{1}{8}$ "W x 36 $\frac{1}{8}$ "D

72"W LH Double Pedestal  
L-Desk (B/B/F, F/F)  
29"H x 71 $\frac{1}{8}$ "W x 83 $\frac{1}{2}$ "D



72"W Double Pedestal  
Kneespace Credenza  
(F/F, F/F)  
29"H x 71 $\frac{1}{8}$ "W x 23 $\frac{3}{8}$ "D



72"W RH Single Pedestal  
Credenza (F/F)  
29"H x 71 $\frac{1}{8}$ "W x 23 $\frac{3}{8}$ "D



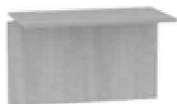
66"W Double Pedestal  
Kneespace Credenza  
(F/F, D)  
29"H x 66"W x 23 $\frac{3}{8}$ "D



42"W RH Single  
Pedestal Return (F/F)  
29"H x 42 $\frac{1}{2}$ "W x 23 $\frac{3}{8}$ "D

72"W LH Single Pedestal  
Credenza (F/F)  
29"H x 71 $\frac{1}{8}$ "W x 23 $\frac{3}{8}$ "D

42"W LH Single  
Pedestal Return (F/F)  
29"H x 42 $\frac{1}{2}$ "W x 23 $\frac{3}{8}$ "D



42"W Bridge  
26 $\frac{1}{2}$ "H x 44"W x 23 $\frac{3}{8}$ "D



72"W Universal Freestanding  
Peninsula  
29"H x 71 $\frac{1}{8}$ "W x 29 $\frac{3}{4}$ "D



Face Rail  
24 $\frac{7}{8}$ "H x 4 $\frac{7}{8}$ "W x 1"D

## Overhead Storage



72\"W Credenza  
Overhead  
43 $\frac{1}{8}$ \"H x 71 $\frac{1}{8}$ \"W x 15 $\frac{3}{8}$ \"D



66\" Overhead  
43 $\frac{1}{8}$ \"H x 66\"W x 15 $\frac{3}{8}$ \"D



36\" Overhead  
with Glass Doors  
43 $\frac{1}{8}$ \"H x 35 $\frac{5}{8}$ \"W x 15 $\frac{3}{8}$ \"D

## Filing/Storage

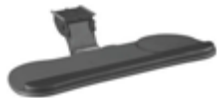


2-Drawer Lateral File  
29\"H x 35 $\frac{5}{8}$ \"W x 23 $\frac{3}{8}$ \"D



Storage Cabinet  
29\"H x 35 $\frac{5}{8}$ \"W x 23 $\frac{3}{8}$ \"D

## Accessories



Deluxe Articulating  
Keyboard Tray  
(Med Track)  
1 $\frac{1}{4}$ \"H x 27\"W x 11\"D



Articulating  
Keyboard Shelf  
3 $\frac{5}{8}$ \"H x 24 $\frac{5}{8}$ \"W x 19 $\frac{1}{2}$ \"D

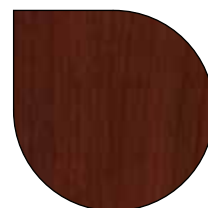


Multi-Purpose Drawer  
w/Drop Front  
3 $\frac{5}{8}$ \"H x 27 $\frac{1}{8}$ \"W x 17 $\frac{3}{8}$ \"D

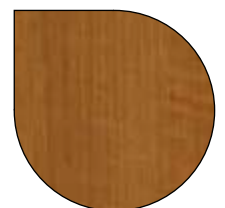


Light Pack  
1 $\frac{3}{4}$ \"H x 23 $\frac{1}{2}$ \"W x 3 $\frac{1}{2}$ \"D

## Finish Options



Harvest Cherry  
(CS)



Golden Anigre  
(GA)



## Where are You? We Go There.



Bush Business Furniture is selected specifically for its ease in a smooth delivery right to your office door, packed with care and ready to assemble. (RTA Office Furniture)

- ✓ Small Orders
- ✓ Closed spaces, tight stairways
- ✓ Fast turnarounds
- ✓ Unusual hours

If DIY office furniture is not your thing, don't worry. We'll work with you to install a quality, professional office, anywhere. Within 12 days or less.\*

\*In the Continental U.S. Some locations may take longer

### Standard Delivery/Self Install:

- ✓ RTA office furniture
- ✓ Product ships within 2 business days following order placement\*
- ✓ Delivered within 3-5 business days in the lower 48 states (remote locations may take longer)
- ✓ Depending on order size, product is delivered to the threshold or room of choice
- ✓ Large or heavy orders that qualify for room of choice delivery will get a prescheduled appointment time

\*Some restrictions apply

### Premium Delivery/Fully Assembled:

Hassle-free delivery and installation

- ✓ Product ships within 2 business days following order receipt\*
- ✓ Delivery within 12 business days in the contiguous United States (remote locations may take longer)
- ✓ Prescheduled appointment time for your convenience
- ✓ Furniture assembled and installed inside the room of choice to residential and business locations
- ✓ Service includes adjustment of desks, drawers and doors; as well as leveling, dusting and removal of all packaging materials – all in a single visit
- ✓ We assume the risk associated with furniture delivery and installation. From start to finish, we manage the order, handle the details and execute the follow-up. We go the last mile.

## Customer Service/Sales Support

How can we help you?

Please call 888-442-8242 for assistance with questions regarding office furniture plans, product availability, parts replacement, warranty issues and general product information. Office hours are Monday-Friday, 9 am–6 pm ET excluding major holidays.





# Warranty

## LIMITED LIFETIME WARRANTY

- Quantum™
- Milano2
- Momentum
- Realize™
- Synchronize 2000
- Synchronize 1000
- Seating
  - Amp
  - Charge
  - Dash
  - Pace
  - Spur
- BBF Conference Tables

## 10 YEAR COMMERCIAL WARRANTY

- Aspen Tables
- Enterprise
- Office-in-an-Hour™
- ProPanels™
- Sector
- Series A
- Series C
- Syndicate
- Venture

## 10 YEAR LIMITED WARRANTY

- Seating
  - Activate
  - Advance
  - Attain
  - Energize
  - Invite

---

## Environmental Sustainability

At BBF, we are proud to be good stewards of the environment, taking care to be environmentally conscious from the beginning to the end of our manufacturing process.

Some of our environmental initiatives include:

- CARB: All BBF products are compliant with CARB (California Air Resource Board) standards for reduced formaldehyde emissions
- EPPD ownstream Program (Composite Panel Association): More than 50% of panels purchased from EPP sources; board is 100% pre- or post-consumer recycled
- Energy Reduction: Reducing electricity consumption and improving machinery efficiency
- Landfill Reduction: Diversion of plastic waste away from landfills and improved recycling of plastic, cardboard, tin and scrap metal
- Corporate Recycling: Recycling plastic, paper and aluminum cans in our corporate offices
- Special Sustainability Teams: Tasked with improving efficiency and reducing waste in our manufacturing processes
- Ongoing Certifications: Actively participating in industry-related programs, such as BIFMA e3 Level and ISO 14001 82

---

## Product Testing

We fit your demands for safety and durability. Our commercial products undergo rigorous testing in our sophisticated in-house testing laboratory, to ensure that they meet or exceed professional ANSI/BIFMA standards for safety and performance.

We test:

- Resistance to scratches, stains and abrasions
- Weight load
- Leg strength
- Stability/dislodgement
- Cycle testing on casters, hinges and drawer suspensions

The result of this obsessive attention to quality is that our products are ergonomically correct and compliant with state and federal health and safety guidelines.





***Your Office Will Never Be The Same!***

**HQ 24 West 39th Street New York City, NY 10018 Tel: 888.442.8242**

**Serving the Nation: Atlanta | Boston | Chicago | Dallas | Denver | Houston | Los Angeles | Miami | Philadelphia | San Diego | Tampa | Virginia | Washington DC**