



cubicles.com

888-442-8242



BUSH Quantum™



*Your Office Will Never Be The Same!*

HQ 24 West 39th Street New York City, NY 10018 Tel: 888.442.8242

Serving the Nation: Atlanta | Boston | Chicago | Dallas | Denver | Houston | Los Angeles | Miami | Philadelphia | San Diego | Tampa | Virginia | Washington DC

# BBF fits your style, your budget, your business.

## BBF fits your furniture needs with:



- Product lines for varying space requirements and work styles
- Styles and aesthetic choices for any budget
- Products tested to withstand 40-hour+ work weeks
- Products that perform anywhere you work
- Office desks, credenzas, hutches, and Filing drawers to accommodate any task.

## BBF fits needs for value-added service:



- Nationwide delivery and installation to any zip code\*
- Two-day order fulfillment, through our East and West coast distribution centers
- Accommodation of small orders and quick turnarounds
- Environmentally-conscious operating and manufacturing processes
- RTA Office Furniture delivers right to your door for a perfect DIY office furniture solution
- Full Assembly also available!

\*Continental U.S.

“



*Our small accounting firm needs budget office furniture. Is it too much to ask for professional space planning & installation for three offices?"*

-Stuart, Traditional Small Business



*"I need cool office furniture for our four person graphic design firm right away. Unfortunately everything I've seen that matches our aesthetic is way out of our price range"*

- Angela, Non-Traditional Small Business



*"As Facilities Manager I set up 8-10 telecommuter remote office locations monthly for around \$ 1500 each."*

-Whitney, Remote Office Environment



*I'm launching my own business and I need high-quality home office modular furniture for a professional, home-based office."*

- Brandon, Office@Home Environment

”



## BUSH Furniture Desk

# Quantum never goes out of style.

It's the little black dress or classic blue blazer—everyone should have one. The Bush Quantum can be arranged into basic, small-footprint configurations or expanded and accessorized for more complex needs.



- Reflects thoughtful attention to detail
- Comfortable and ergonomically correct
- Cross-over flexibility: works well in both open floor plans and private offices
- Refined aesthetic with broad, understated appeal
- Feature-rich



Modern Cherry Finish  
72"W LH Single Pedestal Desk(B/B/F), 42"W RH Single Pedestal Return (B/B/F),  
72"W Overhead (Tall), 30"W 5-Shelf Bookcase, 36"W 2-Drawer Lateral File  
Optional Accessories Shown: Adjustable Paper Tray, Metal White Board, CPU Holder





# Fits your function



Harvest Cherry Finish  
48"W x 42"D RH Corner, 30"W LH Return Shell,  
RH Storage Tower (B/F), 48"W Overhead (Short)  
Optional Accessories Shown: Adjustable Paper Tray, CPU Holder, Articulating Keyboard Tray

## What kind of Bush office desk do you need?

How will you use your furniture?

This Bush office desk features a range of options from a single desk to multiple workstations. Choose from a pre-configured typical or have a custom space plan completed free.

BUSH Quantum



Modern Cherry Finish  
72"W Bow Front Desk Shell, 48"W Bridge, 72" Single RH Pedestal Credenza (B/B/F),  
30"W Piler/Filer, 30"W Overhead (Tall), 72"W Overhead (Tall)  
Optional Accessories Shown: Adjustable Paper Tray, Monitor Arm w/Post



Modern Cherry Finish  
Storage Tower(Tall), 72"W Overhead (Tall),  
72"W LH Single Pedestal Desk(B/B/F), 72"W Desk Shell, 48"W Bridge  
Optional Accessories Shown: Adjustable Paper Tray



Harvest Cherry Finish  
(2) 72"W Overhead (Tall), (2) 48"W x 42"D RH Corner  
(2) 48"W d Peninsula, (2) 30"W LH Return Shell, (2) Pedestal (B/B/F)





Optional Data/Power Hub





cubicles.com

888-442-8242

BUSH Quantum

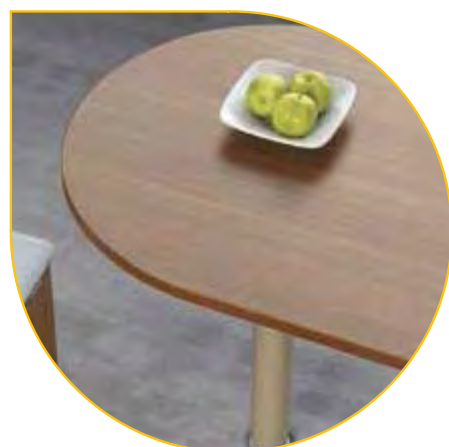
# BUSH Quantum Collection

## Features

- Total flexibility to create administrative, professional or executive office configurations
- Exclusive Diamond Coat<sup>®</sup> work surface is one of the most durable, attractive surfaces available in commercial office furniture, featuring superior resistance to scratches, abrasions and stains
- Quantum offers casegoods components but has the added benefit of modularity, for supremely easy installation and flexible configuration options
- Lockable personal storage space, technology integration and a wire management system add to the line's functionality and value
- Two overhead storage heights offer the option of either collaboration or privacy for configuration flexibility
- Meets ANSI/BIFMA standards for safety and performance
- Commercial quality backed by limited lifetime manufacturer's warranty
- FREE space-planning assistance is available



Ergonomic accessories



Durable work surfaces



Convenient storage options



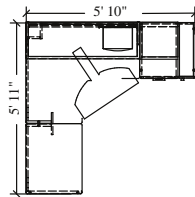
BUSH BUSINESS FURNITURE

# BUSH Quantum Collection

## Office Typicals



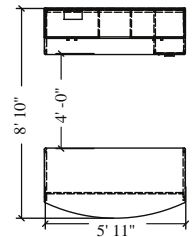
Qty.	Item
1	48"W x 42"D RH Corner Shell
1	30"W LH Return Shell
1	RH Storage Tower (B/F)
1	48"W Overhead (Short)



Optional Accessories Shown: Adjustable Paper Tray  
Articulating Keyboard Tray



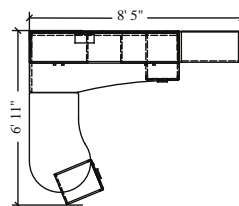
Qty.	Item
1	72"W Bow Front Desk Shell
1	72"W RH Single Pedestal Credenza (B/B/F)
1	72"W Overhead (Tall)



Optional Accessories Shown: Adjustable Paper Tray



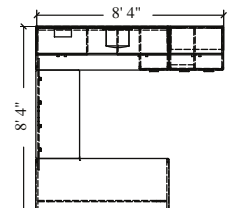
Qty.	Item
1	72"W RH Single Pedestal Desk (B/B/F)
1	48"W b Peninsula
1	72"W Overhead (Tall)
1	30"W 5-Shelf Bookcase
1	Mobile Ped w/Cushion



Optional Accessories Shown: Adjustable Paper Tray



Qty.	Item
1	72"W Desk Shell
1	48"W Bridge
1	72"W RH Single Pedestal Credenza (B/B/F)
1	72"W Overhead (Tall)
1	30"W Piler/Filer
1	30"W Overhead (Tall)

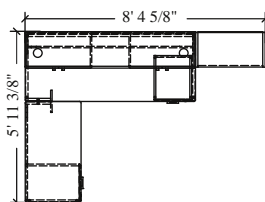


Optional Accessories Shown: Adjustable Paper Tray



Qty. Item

- |   |  |
|---|--|
| 1 | 72"W RH Single Pedestal Credenza (B/B/F) |
| 1 | 42"W LH Single Pedestal Return (B/B/F)   |
| 1 | 72"W Overhead (Tall)                     |
| 1 | 30"W 5-Shelf Bookcase                    |

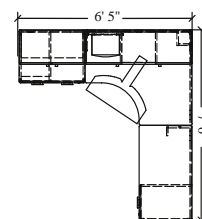


Optional Accessories Shown: Adjustable Paper Tray



Qty. Item

- |   |  |
|---|--|
| 1 | 48"W x 42"D LH Corner Shell            |
| 1 | 42"W RH Single Pedestal Return (B/B/F) |
| 1 | 48"W Overhead (Tall)                   |
| 1 | 30"W Piler/Filer                       |
| 1 | 30"W Overhead (Tall)                   |

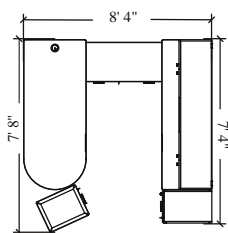


Optional Accessories Shown: Adjustable Paper Tray, Articulating Keyboard Tray



Qty. Item

- |   |                                       |
|---|---------------------------------------|
| 1 | 72"W Universal Freestanding Peninsula |
| 1 | 72"W Credenza Shell                   |
| 1 | 48"W Bridge                           |
| 1 | 72"W Overhead (Tall)                  |
| 1 | Storage Tower (Tall)                  |
| 1 | Mobile Pedestal w/Cushion (B/F)       |

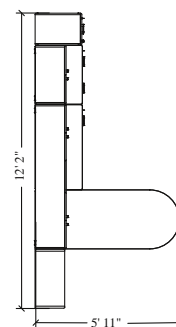


Optional Accessories Shown: Adjustable Paper Tray



Qty. Item

- |   |  |
|---|--|
| 1 | 72"W Universal Freestanding Peninsula  |
| 1 | 42"W RH Single Pedestal Return (B/B/F) |
| 1 | 30"W Piler/Filer                       |
| 1 | Storage Tower (Tall)                   |
| 1 | 30"W Overhead (Tall)                   |
| 1 | 72"W Overhead (Tall)                   |
| 1 | 30"W 5-Shelf Bookcase                  |



Optional Accessories Shown: Adjustable Paper Tray



# BUSH Quantum Collection

## Work Surfaces and Extensions



72"W Bow Front Desk Shell  
30"H x 71 $\frac{3}{8}$ "W x 35 $\frac{1}{2}$ "D



72"W Desk Shell  
30"H x 71 $\frac{3}{8}$ "W x 29 $\frac{1}{4}$ "D



72"W Credenza Shell  
30"H x 71 $\frac{3}{8}$ "W x 23 $\frac{1}{2}$ "D



48"W x 42"D RH Corner  
30"H x 47 $\frac{3}{8}$ "W x 42 $\frac{1}{8}$ "D



72"W RH Single Pedestal  
Desk (B/B/F)  
30"H x 71 $\frac{3}{8}$ "W x 29 $\frac{3}{4}$ "D



72"W RH Single Pedestal  
Credenza (B/B/F)  
30"H x 71 $\frac{3}{8}$ "W x 23 $\frac{1}{2}$ "D



42"W RH Single  
Pedestal Return (B/B/F)  
30"H x 42 $\frac{1}{2}$ "W x 23 $\frac{1}{2}$ "D



42"W x 42"D Universal  
Corner Desk  
30"H x 42 $\frac{1}{8}$ "W x 42 $\frac{1}{8}$ "D

72"W LH Single Pedestal  
Desk (B/B/F)  
30"H x 71 $\frac{3}{8}$ "W x 29 $\frac{3}{4}$ "D

72"W LH Single Pedestal  
Credenza (B/B/F)  
30"H x 71 $\frac{3}{8}$ "W x 23 $\frac{1}{2}$ "D

42"W LH Single  
Pedestal Return (B/B/F)  
30"H x 42 $\frac{1}{2}$ "W x 23 $\frac{1}{2}$ "D



30"W RH Return Shell  
30"H x 29 $\frac{1}{4}$ "W x 23 $\frac{1}{2}$ "D



72"W Universal  
Freestanding Peninsula  
29 $\frac{3}{4}$ "H x 71 $\frac{3}{8}$ "W x 29 $\frac{1}{4}$ "D



48"W d Peninsula  
30"H x 47 $\frac{3}{8}$ "W x 29 $\frac{1}{4}$ "D



48"W Bridge  
30"H x 47 $\frac{3}{8}$ "W x 23 $\frac{1}{2}$ "D

30"W LH Return Shell  
30"H x 29 $\frac{1}{4}$ "W x 23 $\frac{1}{2}$ "D

48"W b Peninsula  
30"H x 47 $\frac{3}{8}$ "W x 29 $\frac{1}{4}$ "D

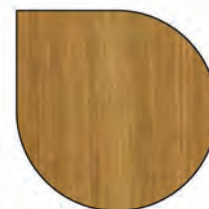


42"W Bridge  
30"H x 41 $\frac{1}{2}$ "W x 23 $\frac{1}{2}$ "D



30"W Bridge  
30"H x 29 $\frac{1}{4}$ "W x 23 $\frac{1}{2}$ "D

## Finish Options



Modern Cherry  
(MC)



Harvest Cherry  
(CS)

# BUSH Quantum Collection Overhead and Storage

 **cubicles.com**  
888-442-8242  
BUSH Quantum



72"W Overhead (Tall)  
37 $\frac{1}{8}$ "H x 71 $\frac{1}{8}$ "W x 15 $\frac{1}{4}$ "D



60"W Overhead (Tall)  
37 $\frac{1}{8}$ "H x 59 $\frac{1}{2}$ "W x 15 $\frac{1}{4}$ "D



60"W Overhead (Short)  
23 $\frac{1}{8}$ "H x 59 $\frac{1}{2}$ "W x 15 $\frac{1}{4}$ "D  
48"W Overhead (Short)  
23 $\frac{1}{8}$ "H x 47 $\frac{1}{4}$ "W x 15 $\frac{1}{4}$ "D



48"W Overhead (Tall)  
37 $\frac{1}{8}$ "H x 47 $\frac{1}{4}$ "W x 15 $\frac{1}{4}$ "D



36"W Overhead with  
Doors (Tall)  
37 $\frac{1}{8}$ "H x 35 $\frac{3}{8}$ "W x 14 $\frac{1}{2}$ "D



30"W Overhead (Tall)  
37 $\frac{1}{8}$ "H x 28 $\frac{3}{8}$ "W x 13 $\frac{3}{4}$ "D



RH Storage Tower (B/F)  
53"H x 23 $\frac{3}{8}$ "W x 23 $\frac{1}{2}$ "D



LH Storage Tower (B/F)  
53"H x 23 $\frac{3}{8}$ "W x 23 $\frac{1}{2}$ "D



Storage Tower (Tall)  
67"H x 15 $\frac{3}{4}$ "W x 23 $\frac{1}{2}$ "D



30"W Piler/Filer  
30"H x 29 $\frac{1}{4}$ "W x 23 $\frac{1}{2}$ "D



36"W 2-Drawer Lateral File  
30"H x 35 $\frac{3}{4}$ "W x 23 $\frac{1}{2}$ "D



Pedestal (B/B/F)  
28 $\frac{3}{8}$ "H x 15 $\frac{3}{4}$ "W x 19 $\frac{1}{2}$ "D



Pedestal (F/F)  
28 $\frac{3}{8}$ "H x 15 $\frac{3}{4}$ "W x 19 $\frac{1}{2}$ "D



Mobile Pedestal  
w/Cushion (B/F)  
19 $\frac{1}{2}$ "H x 15 $\frac{3}{4}$ "W x 20 $\frac{1}{4}$ "D



30"W 5-Shelf Bookcase  
67"H x 29 $\frac{1}{4}$ "W x 14 $\frac{1}{2}$ "D

# BUSH Quantum Collection Accessories



Adjustable Paper Tray  
15 $\frac{1}{2}$ "H x 15 $\frac{1}{8}$ "W x 10 $\frac{1}{4}$ "D



Metal White Board  
16 $\frac{3}{8}$ "H x 11 $\frac{3}{8}$ "W x  $\frac{5}{8}$ "D



Monitor Arm w/Post  
20 $\frac{1}{2}$ "H x 12 $\frac{1}{8}$ "W x 14"D



Data/Power Hub  
2 $\frac{3}{8}$ "H x 5 $\frac{1}{2}$ "W x 6 $\frac{3}{8}$ "D



CPU Holder  
22 $\frac{1}{2}$ "H x 9 $\frac{1}{8}$ "W x 14 $\frac{1}{8}$ "D



Articulating  
Keyboard Tray  
3 $\frac{1}{8}$ "H x 24 $\frac{1}{8}$ "W x 19 $\frac{1}{2}$ "D



Deluxe Articulating Keyboard  
Tray (Long/Med Track)  
1 $\frac{1}{4}$ "H x 27"W x 11"D



Pencil Drawer  
2 $\frac{1}{8}$ "H x 26 $\frac{1}{8}$ "W x 15 $\frac{1}{8}$ "D



Multi-purpose Drawer  
w/Drop Front  
3 $\frac{1}{8}$ "H x 27 $\frac{1}{8}$ "W x 17 $\frac{1}{8}$ "D



Universal Keyboard Shelf  
4"H x 30 $\frac{1}{8}$ "W x 16 $\frac{1}{8}$ "D



Task Light  
1 $\frac{1}{2}$ "H x 23 $\frac{1}{8}$ "W x 3 $\frac{1}{2}$ "D





## Where are You? We Go There.

Bush Business Furniture is selected specifically for its ease in a smooth delivery right to your office door, packed with care and ready to assemble. (RTA Office Furniture)



- ✓ Small Orders
- ✓ Closed spaces, tight stairways
- ✓ Fast turnarounds
- ✓ Unusual hours

If DIY office furniture is not your thing, don't worry. We'll work with you to install a quality, professional office, anywhere. Within 12 days or less.\*

\*In the Continental U.S. Some locations may take longer

### Standard Delivery/Self Install:

- ✓ RTA office furniture
- ✓ Product ships within 2 business days following order placement\*
- ✓ Delivered within 3-5 business days in the lower 48 states (remote locations may take longer)
- ✓ Depending on order size, product is delivered to the threshold or room of choice
- ✓ Large or heavy orders that qualify for room of choice delivery will get a prescheduled appointment time

\*Some restrictions apply

### Premium Delivery/Fully Assembled:

Hassle-free delivery and installation

- ✓ Product ships within 2 business days following order receipt\*
- ✓ Delivery within 12 business days in the contiguous United States (remote locations may take longer)
- ✓ Prescheduled appointment time for your convenience
- ✓ Furniture assembled and installed inside the room of choice to residential and business locations
- ✓ Service includes adjustment of desks, drawers and doors; as well as leveling, dusting and removal of all packaging materials – all in a single visit
- ✓ We assume the risk associated with furniture delivery and installation. From start to finish, we manage the order, handle the details and execute the follow-up. We go the last mile.

## Customer Service/Sales Support

How can we help you?

Please call 888-442-8242 for assistance with questions regarding office furniture plans, product availability, parts replacement, warranty issues and general product information. Office hours are Monday-Friday, 9 am–6 pm ET excluding major holidays.



# Warranty

## LIMITED LIFETIME WARRANTY

- Quantum™
- Milano2
- Momentum
- Realize™
- Synchronize 2000
- Synchronize 1000
- Seating
  - Amp
  - Charge
  - Dash
  - Pace
  - Spur
- BBF Conference Tables

## 10 YEAR COMMERCIAL WARRANTY

- Aspen Tables
- Enterprise
- Office-in-an-Hour™
- ProPanels™
- Sector
- Series A
- Series C
- Syndicate
- Venture

## 10 YEAR LIMITED WARRANTY

- Seating
  - Activate
  - Advance
  - Attain
  - Energize
  - Invite

---

## Environmental Sustainability

At BBF, we are proud to be good stewards of the environment, taking care to be environmentally conscious from the beginning to the end of our manufacturing process.

Some of our environmental initiatives include:

- CARB: All BBF products are compliant with CARB (California Air Resource Board) standards for reduced formaldehyde emissions
- EPPD ownstream Program (Composite Panel Association): More than 50% of panels purchased from EPP sources; board is 100% pre- or post-consumer recycled
- Energy Reduction: Reducing electricity consumption and improving machinery efficiency
- Landfill Reduction: Diversion of plastic waste away from landfills and improved recycling of plastic, cardboard, tin and scrap metal
- Corporate Recycling: Recycling plastic, paper and aluminum cans in our corporate offices
- Special Sustainability Teams: Tasked with improving efficiency and reducing waste in our manufacturing processes
- Ongoing Certifications: Actively participating in industry-related programs, such as BIFMA e3 Level and ISO 14001 82

---

## Product Testing

We fit your demands for safety and durability. Our commercial products undergo rigorous testing in our sophisticated in-house testing laboratory, to ensure that they meet or exceed professional ANSI/BIFMA standards for safety and performance.

We test:

- Resistance to scratches, stains and abrasions
- Weight load
- Leg strength
- Stability/dislodgement
- Cycle testing on casters, hinges and drawer suspensions

The result of this obsessive attention to quality is that our products are ergonomically correct and compliant with state and federal health and safety guidelines.



cubicles.com



***Your Office Will Never Be The Same!***

**HQ 24 West 39th Street New York City, NY 10018 Tel: 888.442.8242**

**Serving the Nation: Atlanta | Boston | Chicago | Dallas | Denver | Houston | Los Angeles | Miami | Philadelphia | San Diego | Tampa | Virginia | Washington DC**