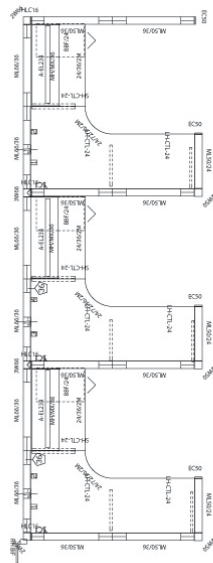


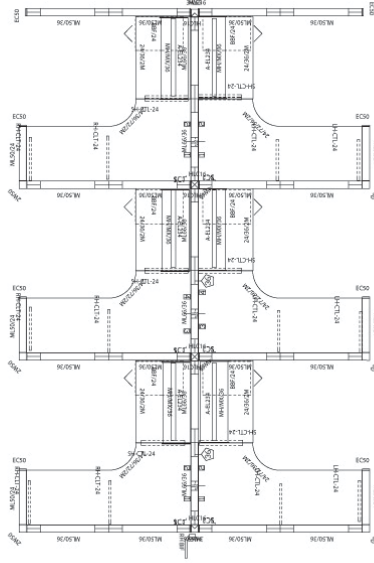
# Matrix Cubicle Systems

1-888-442-8242

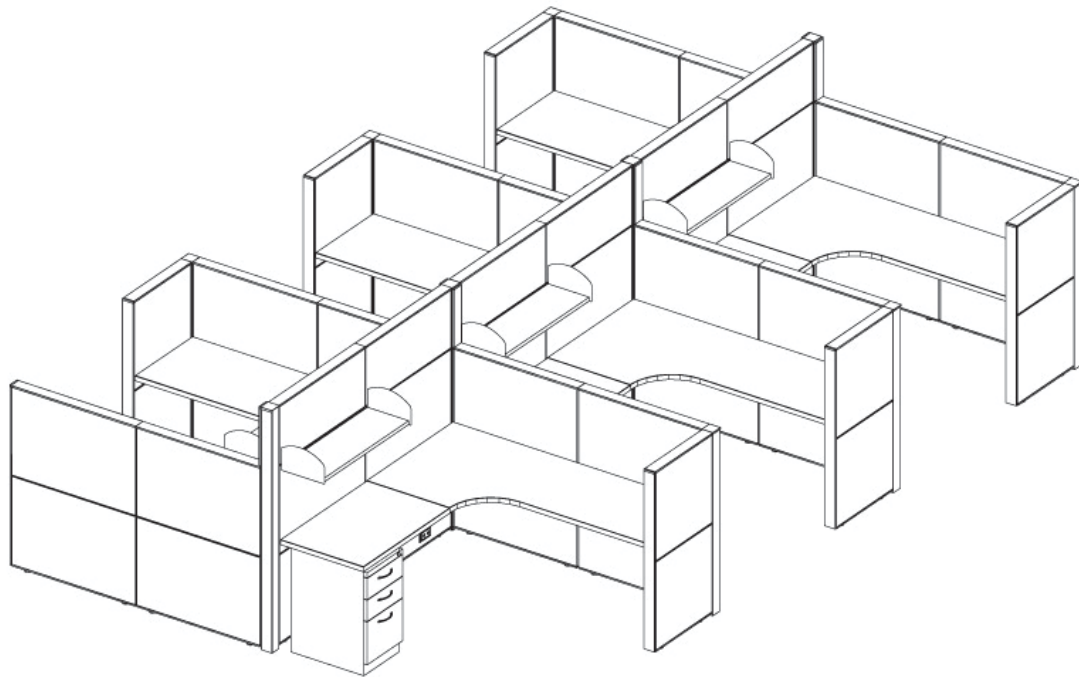
cubicles.com



3 In-Line



6 Pack



Non-Powered

Powered

\$1,959

\$2,155

Size : 6' x 6' x 50" & 66"

Prices are per position based on the above layout, with More Series finishes, and are for **estimating only**. Actual cost will vary by configuration, components & quantity. Delivery & Installation are available at additional cost. Seating is NOT included in above estimates. Typical Lead time: 4-5 Weeks. Please contact us with your space dimensions for free space planning and an exact quote. **Deeper discounts on this system are available for quantities greater than 25 cubicles.** Other systems and pre-owned options available upon request.