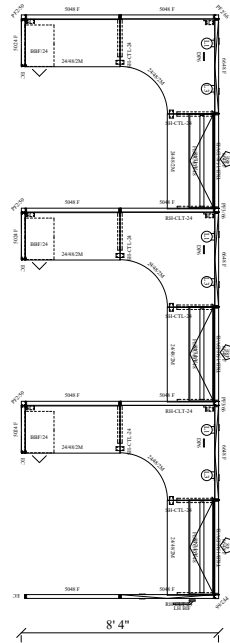


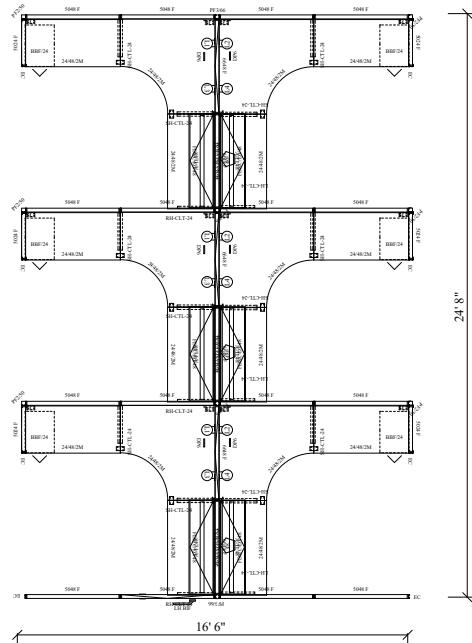
# Divi Modular Workstations

by AIS Furniture

1-888-442-8242



3 In-Line



6 Pack



Non-Powered

Powered

\$1,902

\$2,134

Size : 8' x 8' x 50/66"

Prices are per position based on the above layout and are for **estimating only**. Actual cost will vary by configuration, components & quantity. Delivery & Installation are available at additional cost. Seating is NOT included in above estimates.

Typical Lead time: 2-5 Weeks. Please contact us with your space dimensions for free space planning and an exact quote. **Deeper discounts on this system are available for quantities greater than 25 cubicles.** Other systems and pre-owned options available upon request.

**cubicles.com**