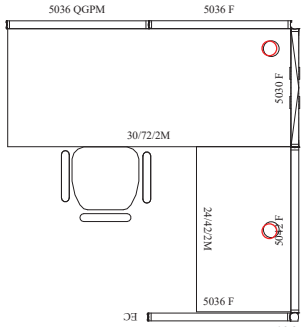


WORKSTATION TYPICALS: AIS Cubicle Workstations



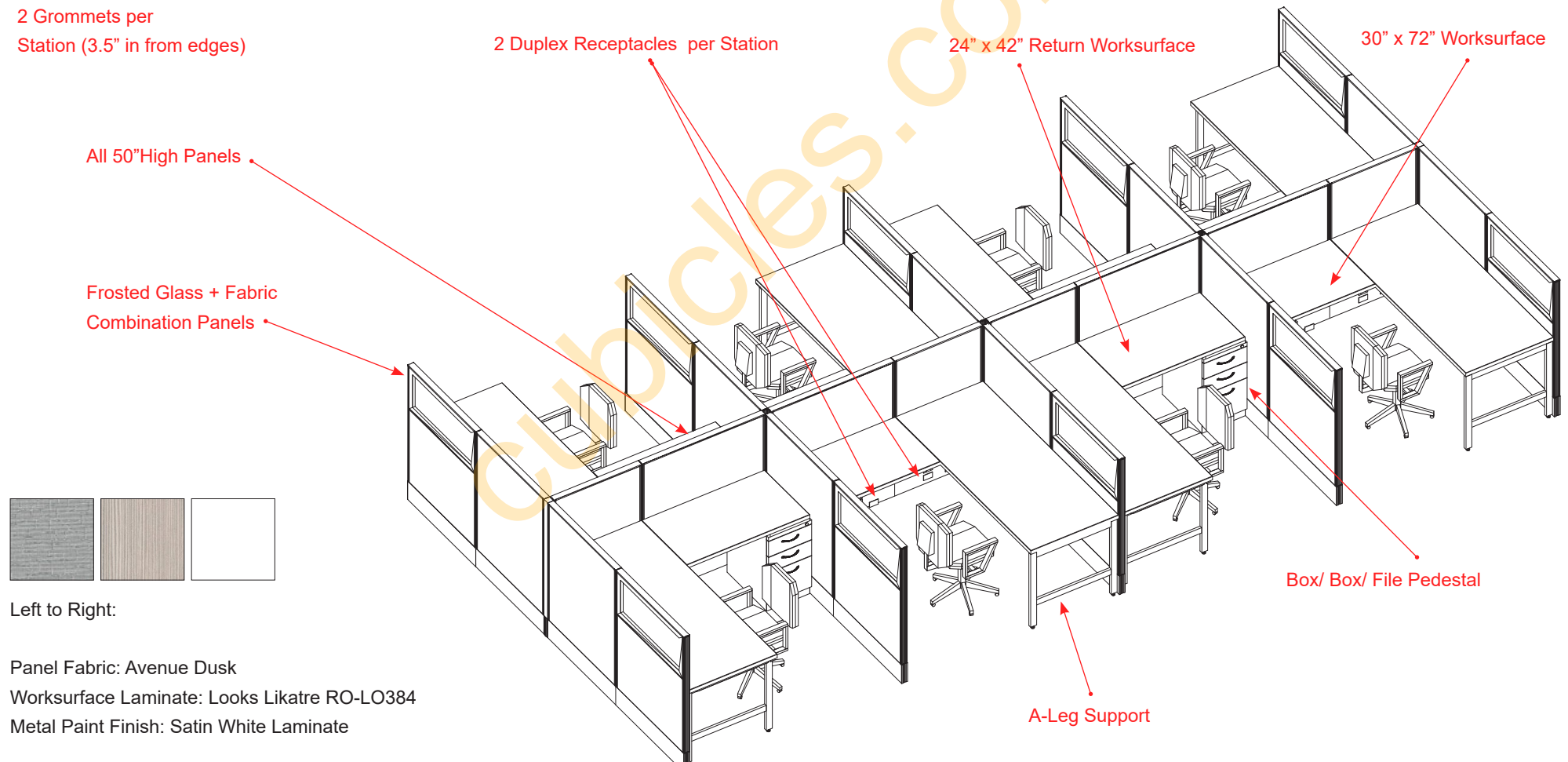
2 Grommets per
Station (3.5" in from edges)

- [52] 6'x6' powered workstations
- 50" high fabric + fabric/frosted glass panels
- box/box/file pedestal
- 2 grommets per workstation

[2] duplex outlets per station



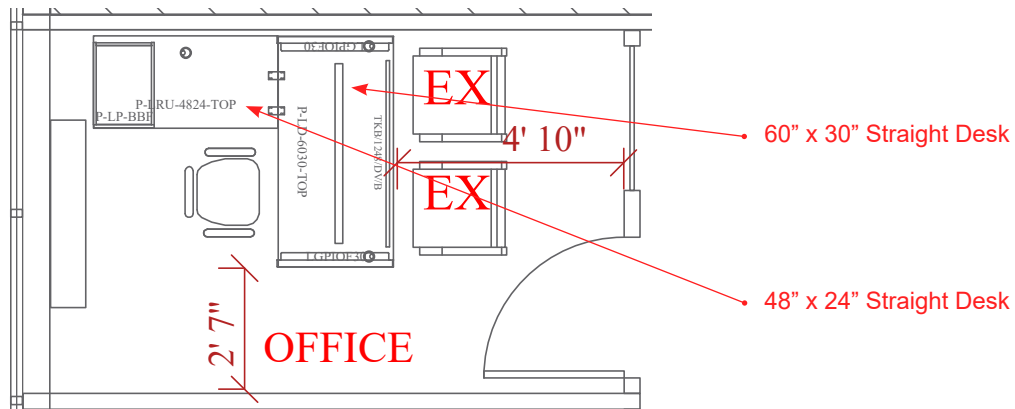
*image for reference



Left to Right:

PRIVATE OFFICES: Compel Pivit Office Furniture

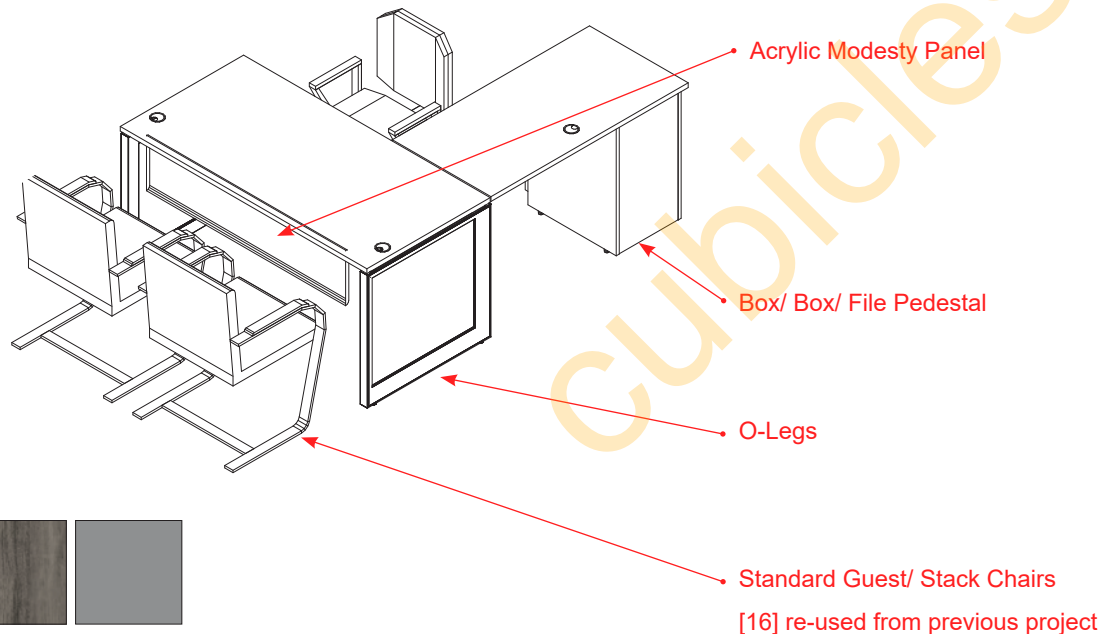
* Product is imported, not manufactured domestically. Availability to be verified at order placement



[22] 60" x 30 main straight desks + [22] 48" x 24" return desks
 - box/ box/ file pedestal
 - acrylic modesty panel



*image for reference - gray ash L-shaped desk



Left to Right:
 Worksurface Laminate: Gray Ash
 Metal Leg Finish: Silver



*image for reference

HUDDLE ROOMS: IOF Furniture



*image for reference - D-top island (not exact)

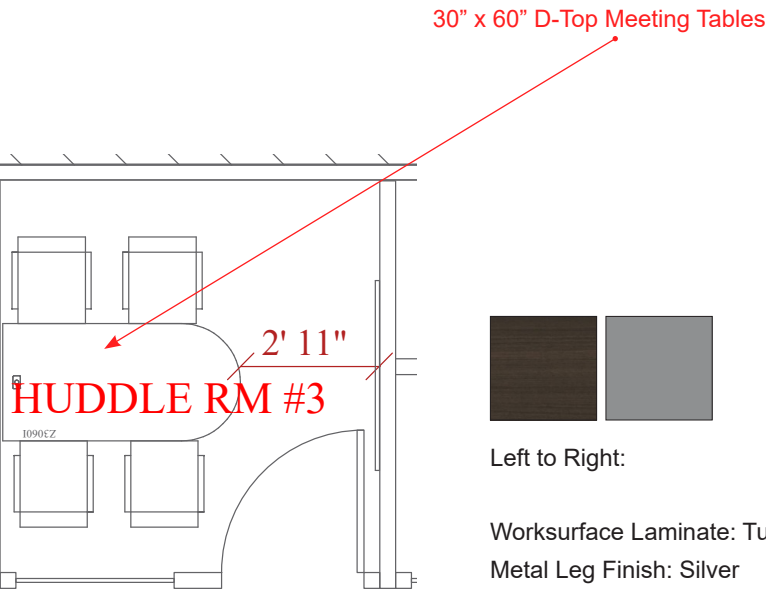
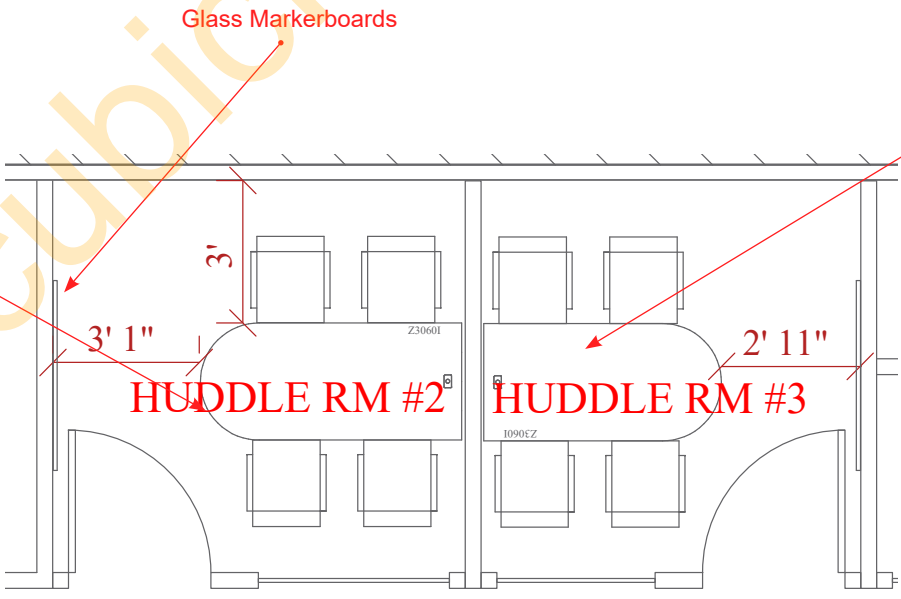
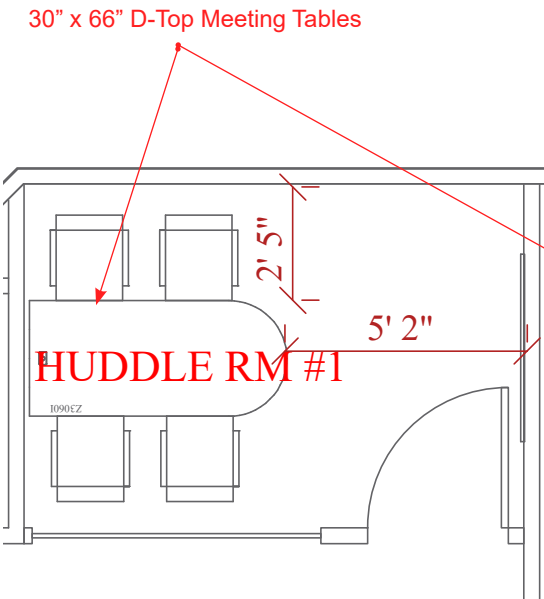


*image for reference - glass markerboard

- [1] 30" x 60" D-top meeting table
- [2] 30" x 66" D-top meeting tables
- [3] 3' x 4' glass markerboards



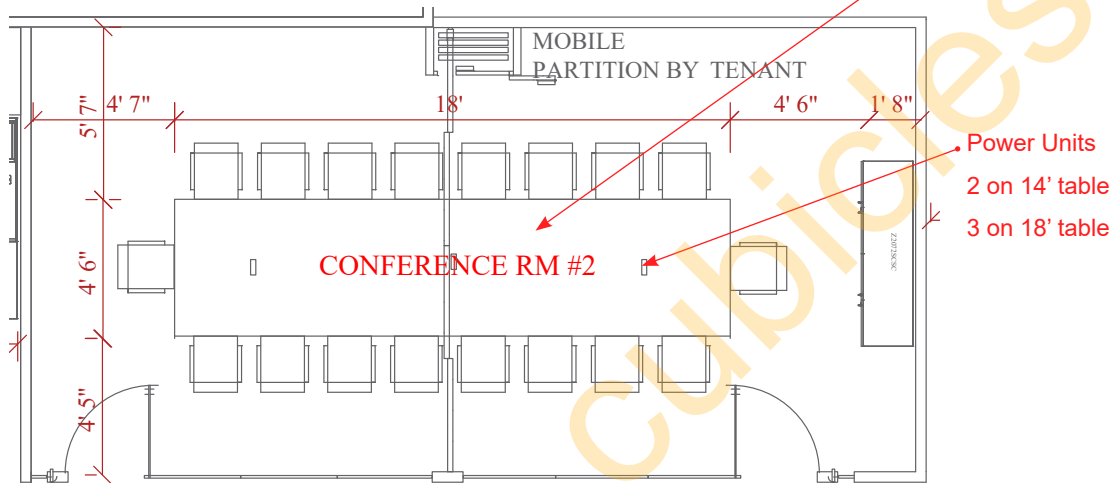
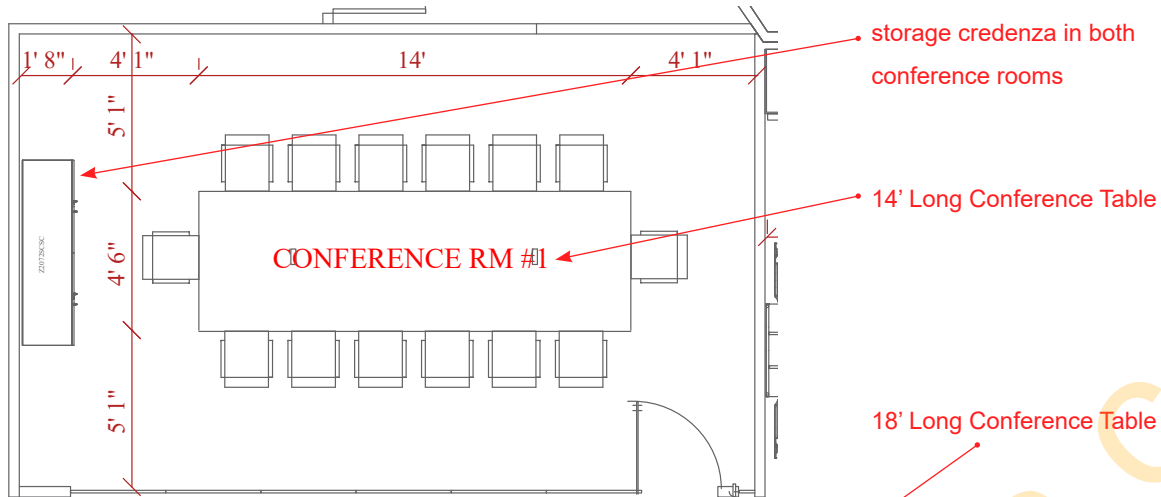
Markerboard Finish: White



Left to Right:

Worksurface Laminate: Tuxedo
Metal Leg Finish: Silver

CONFERENCE ROOMS: IOF Furniture



- [1] 4'6" x 14' rectangular conference table w/ 1-access door
- [1] 4'6" x 18' rectangular conference table w/ 1-access door
- [2] 24" x 72" storage credenza
- [3] power units for 18' table + [2] power units for 14' table

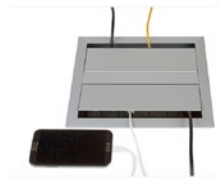
Conference Table Power Units:

Specifications: [6] electrical outlets, [4] USB, [2] CAT-5 RJ45 Data Module, [1] 15-pin VGA M/F, [1] HDMI F/F

Dimensions: 11-5/16" x 10-1/8"



*image for reference - conference table



*insert power units to face longer sides of conference table

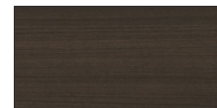


Table Surface Laminate: Tuxedo

Credenza Laminate: Tuxedo



*image for reference - storage credenza

CAFE/PANTRY + LOUNGE AREAS: Global Furniture

Cafe/ Pantry:

[6] popcorn stools

Lounge Areas:

[6] 42" round swap tables (WHITE)

[2] wind 2-seater lounge sofas

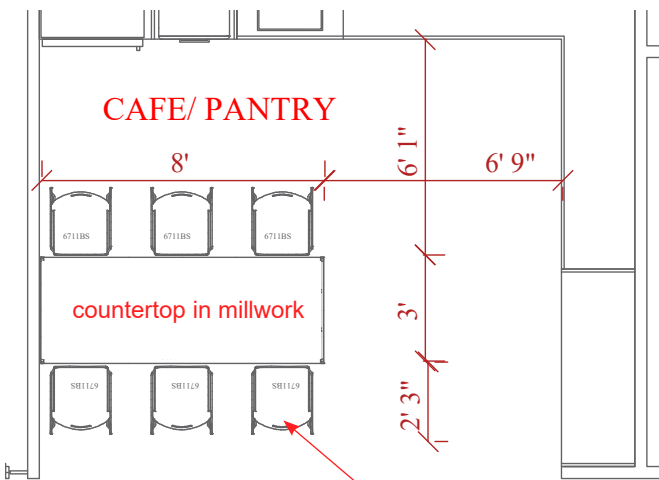
[1] wind rectangular coffee table



*image for reference - swap table



*image for reference - wind coffee table



Colourful Popcorn Stools

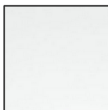
Seating Finishes:

Lip Smacker

Asphalt Night



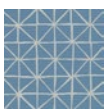
*image for reference - popcorn stool



Cafe/Coffee Table Finish:
Designer White

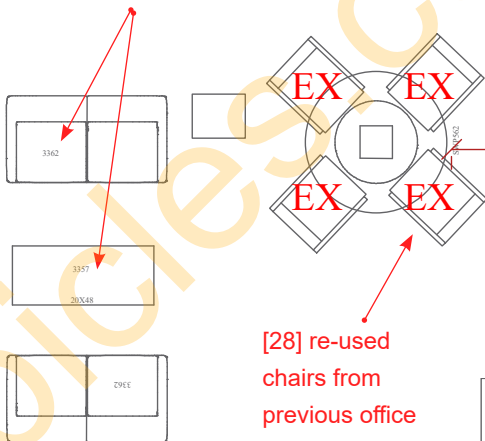


Lounge Seating Fabric 1:
Ultraleather Ermine UL27/
Grade 7 faux leather



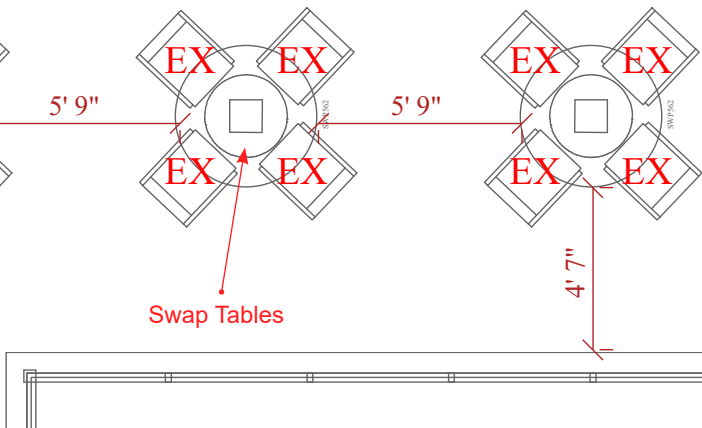
Lounge Seating Fabric 2:
Grid AC-61247
Sky #8

Wind 2-Seater Lounge Sofa + Wind Coffee Table



[28] re-used
chairs from
previous office

LOUNGE AREA #1



Swap Tables



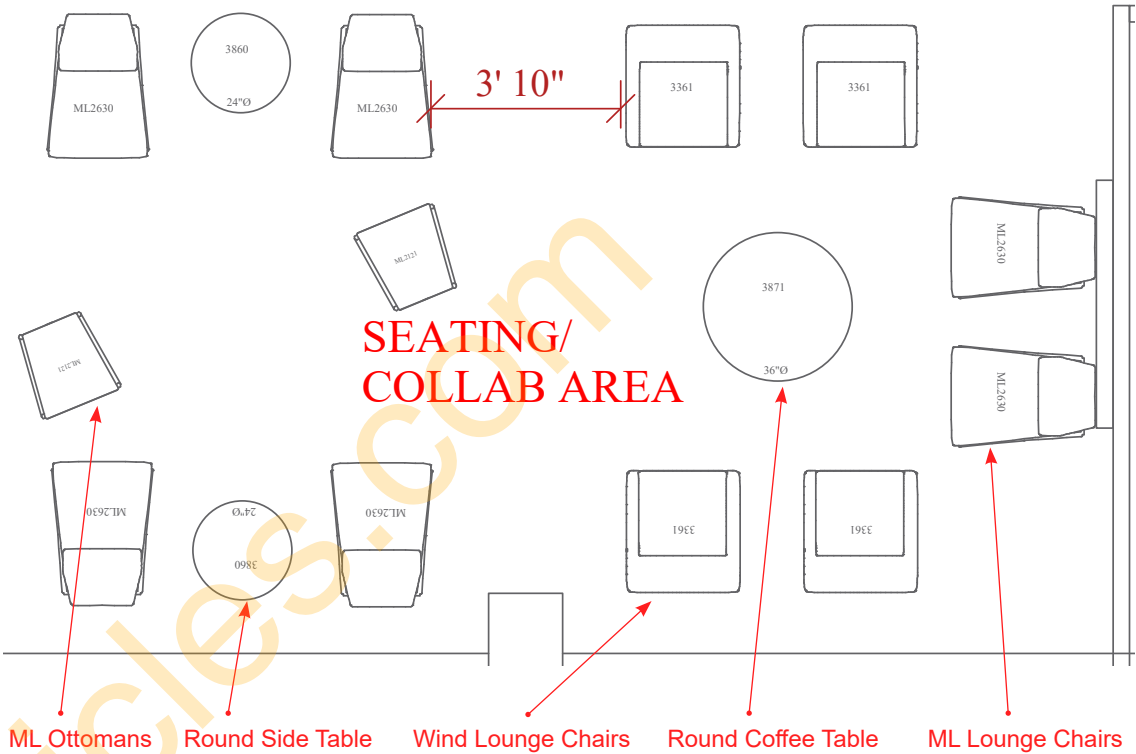
*image for reference - wind 2-seater lounge sofa

SEATING/ COLLAB AREA: Global Furniture

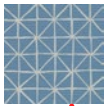
- [6] ML lounge chairs
- [2] ML ottomans
- [4] wind lounge chairs
- [2] 24" round wind side tables
- [1] 36" round wind coffee table



*image for reference



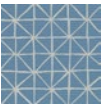
Lounge Seating Fabric 1:
Ultraleather Ermine UL27/
Grade 7 faux leather



Lounge Seating Fabric 2:
Grid AC-61247
Sky #8



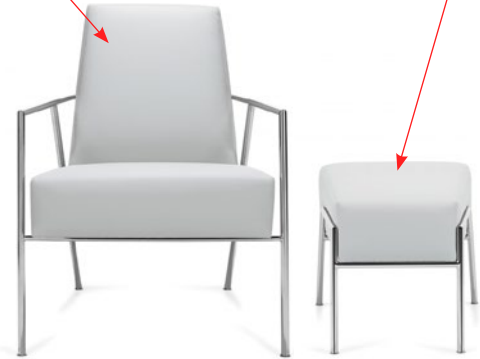
Lounge Seating Fabric 1:
Ultraleather Ermine UL27/
Grade 7 faux leather



Lounge Seating Fabric 2:
Grid AC-61247
Sky #8



Cafe/Coffee Table Finish:
Designer White



ML lounge chair



Wind lounge chair

* fabrics specified as shown - matching Global showroom



Wind round coffee + side table

*image for reference

CHAIRS: Open Plan Systems



[28] OPS3119 Guest Chairs

Light gray mesh back and fabric seat

28 chairs for private offices (44 total needed. 16 existing)



[45] OPS4019 Task Chairs

Adjustable tilt tension
Arm pads adjust upward/downward
Seat height and tension adjustments
Swivel tilt and Tilt lock
Light gray mesh back and fabric seat

22 chairs for private offices
10 chairs for workstations (52 total needed. 42 existing)
12 chairs for huddle rooms
1 chair for reception desk

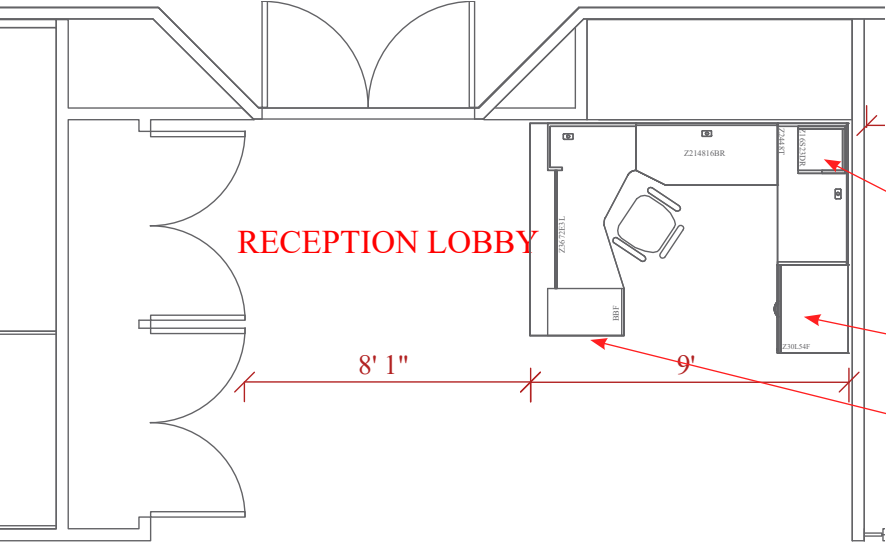


[32] OTG11730B Conference Chairs

Black luxhide upholstery
Mock leather trim
Pneumatic seat height adjustment
Polished aluminum arms

14 chairs for smaller conference room
18 chairs for larger conference room

RECEPTION AREA: Global Zira Furniture



- [1] 6' x 9' x 6'6" U-shaped reception desk
 - 52" high 4-file unit
 - 23" high table top shelf unit
 - [4] fabric tackboards
 - 12" high glazed panels around perimeter
 - 1.5" thick transaction top



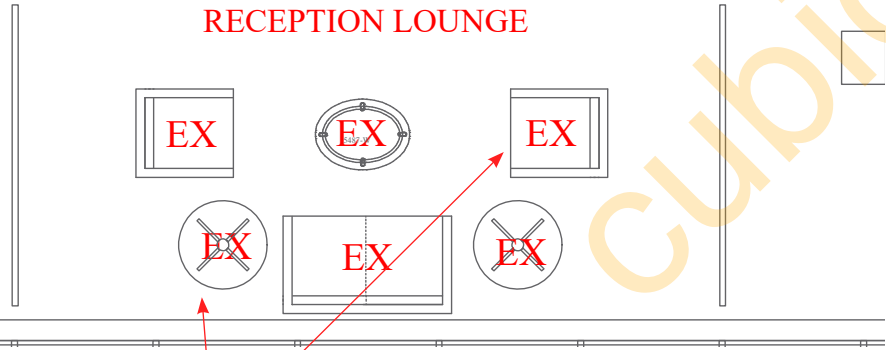
Table Top Shelf Unit

4-File Unit

Single Pedestal Desk



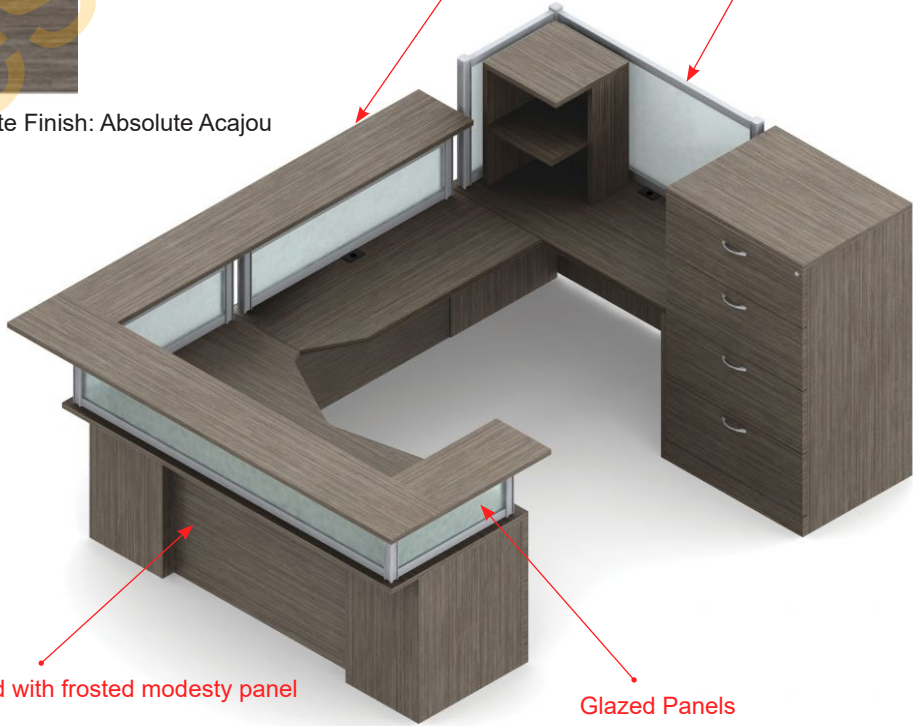
Laminate Finish: Absolute Acajou



- [3] Re-used Lounge Chairs
- [3] Re-used Tables from previous office

Transaction Top

Fabric Tackboards



*image for reference