

PROPOSED FURNITURE PLAN

CENTERS, JAMAICA

[133] CUBICLE STATIONS
 [1] E3 - MARK'S OFFICE
 [2] E - EXECUTIVE OFFICES
 [5] D - DIRECTORS OFFICE
 [11] M- MANAGERS OFFICES
 [2] CONFERENCE ROOMS
 [1] TRAINING ROOM
 [1] RECEPTION AREA

SEATING
 [3] EXECUTIVE CHAIRS
 [18] MANAGERS CHAIRS
 [22] CONFERENCE CHAIRS
 [133] TASK CHAIRS
 [1] RECEPTION DESK CHAIR
 [45] GUEST CHAIRS
 [15] TRAINING CHAIRS

BLUE - POWER ELEMENTS
 RED - NOTES



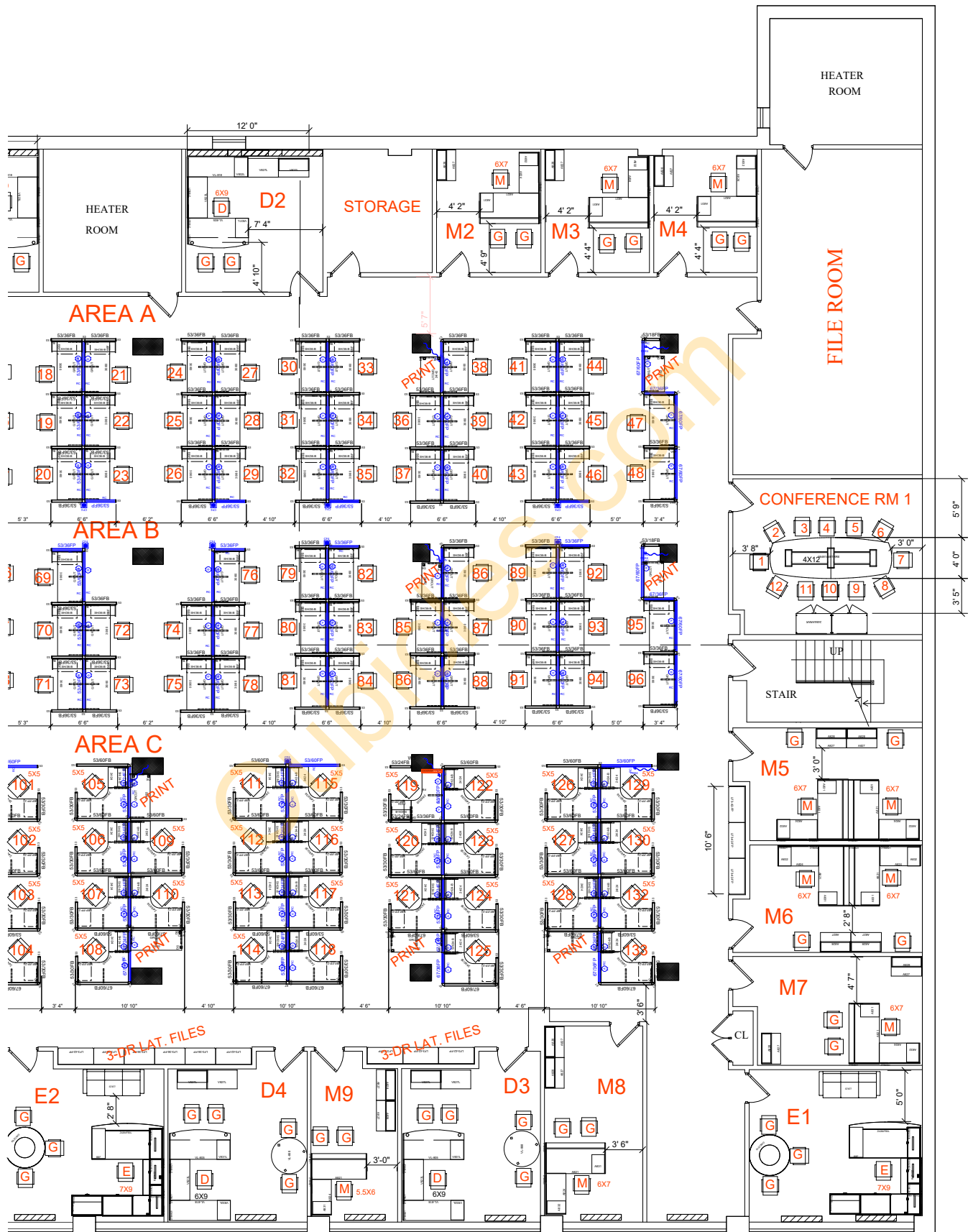
NOTES:

- *ALL IMAGES ON THIS PDF ARE FOR REFERENCE PURPOSE ONLY. NOT SPECIFIC TO THE PROJECT.
- *TRANSPARENT PANELS ARE ONLY TRANSPARENT FOR VISUAL PURPOSE. NOT GLASS.

CLOSE UP 1



CLOSE UP 2



[3] CUBICLE AREAS - A, B & C

O2 Series Corporate Office Furniture

[133] POWERED CUBICLES:

[97] 2.5X5X53"H

[36] 5'X5'X53/67"H

[10] PRINT STATIONS

