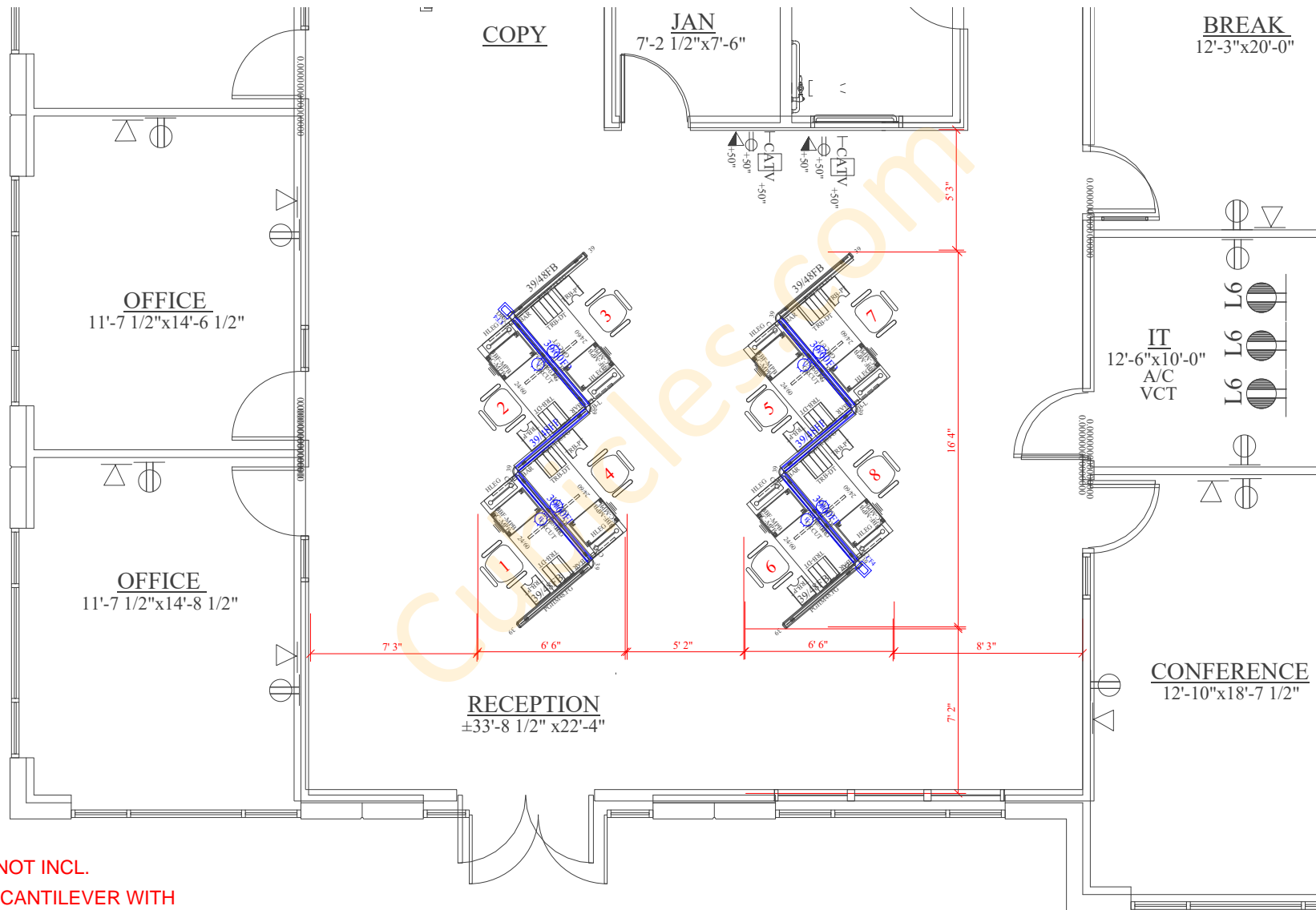


2D LAYOUT

O2 Series Corporate Office Furniture , GRADE 2 PANEL SYSTEMS

[8] 5'X4'X39"H POWERED STATIONS WITH CUSHIONED MOBILE BBF PEDESTAL, 14"H FROSTED MULLIONS AND PAPER MANAGEMENT TRAYS



- * SEATING NOT INCL.
- * REPLACE CANTILEVER WITH CORNER BRACKET WHERE SHOWN